

DETTAGLI

- Abbottonatura con bottoni cuciti a mano
- Taschino portapenne sulla manica
- 2 spacchetti dietro
- Tessuto piquet, no stiro

TAGLIE

S ÷ 5XL
Slim Fit

COLORE

00 Bianco

TESSUTO

100% cotone
145 g / m²



Le misure indicate si riferiscono alle taglie **S** per i capi femminili, **L** per i capi maschili. Per i capi a taglia unica le misure indicate sono effettive.

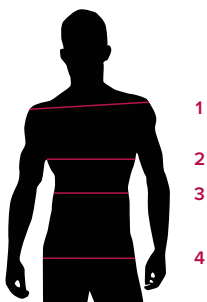
100% Made in Italy, elegante e ricercata nello stile e nei materiali, di fattura eccellente, curata in ogni dettaglio e impreziosita dal tessuto pregiato **100% cotone organico**, no stiro. È caratterizzata dall'armatura piquet e dai bottoni ricoperti, cuciti a mano, con asole a goccia.

COLORI DISPONIBILI



00 Bianco

TABELLE TAGLIE
E CORRISPONDENZE



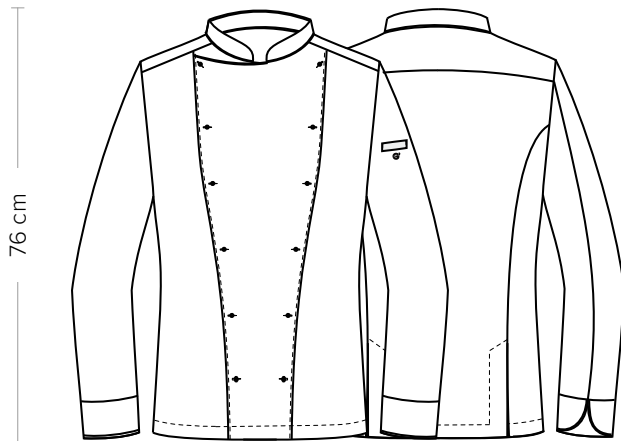
| TABELLA ST-G1 SLIM FIT | XS | S | M | L | XL | XXL | 3XL | 4XL | 5XL |
|---------------------------------|-------|--------|---------|---------|---------|---------|---------|---------|---------|
| 1 - SPALLE | 44 | 45 | 46 | 47 | 49 | 51 | 53 | 55 | 57 |
| 2 - TORACE circonferenza | 92-96 | 96-100 | 100-104 | 104-111 | 111-116 | 116-124 | 124-132 | 132-142 | 142-152 |
| 3 - VITA circonferenza | 80-84 | 84-88 | 88-92 | 92-99 | 99-106 | 106-116 | 116-126 | 126-138 | 138-148 |
| 4 - BACINO circonferenza | 92-96 | 97-101 | 101-105 | 105-111 | 111-117 | 117-125 | 125-133 | 133-143 | 143-153 |

GUIDA ALLE TAGLIE **1)** Prendere le misure anatomiche (corpo con abbigliamento intimo) senza stringere mantenendo ben teso il metro. **Nota:** nel caso vogliate indossare dei camici già con dell'abbigliamento sotto prendete le misure già abbiagliati. **2)** Nel caso tra le misure prese vi fosse una misura a cavallo fra 2 taglie vi consigliamo di prendere quella più grande. **3)** Le misure della tabella sono espresse in centimetri.

DANTE

ITEM CODE
22P08G291

Giblor's
italian work/life specialist



DETAILS

- Buttoning with hand-made buttons
- Pen pocket on sleeve
- 2 rear vents
- Piqué fabric, no iron

SIZES

S ÷ 5XL
Slim Fit

COLOURS

00 White

FABRIC

100% cotton
145 g / m²



The measures indicated refer to sizes **S** for women, **L** for men. For one-size-fits-all garments, the measurements indicated are effective.

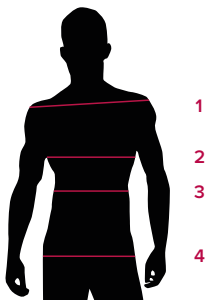
100% Made in Italy, elegant and refined in style and materials, of excellent workmanship with attention to every detail and embellished by the precious **100% organic cotton** fabric, no iron. It is characterized by the pique weave and covered buttons, sewn by hand, with teardrop buttonholes.

AVAILABLE COLOURS



00 White

SIZE TABLES
AND CORRESPONDENCES



| TABLE ST-G1 SLIM FIT | | | | | | | | | |
|--------------------------------|-------|--------|---------|---------|---------|---------|---------|---------|---------|
| SIZE | XS | S | M | L | XL | XXL | 3XL | 4XL | 5XL |
| 1 - SHOULDERS | 44 | 45 | 46 | 47 | 49 | 51 | 53 | 55 | 57 |
| 2 - CHEST circumference | 92-96 | 96-100 | 100-104 | 104-111 | 111-116 | 116-124 | 124-132 | 132-142 | 142-152 |
| 3 - WAIST circumference | 80-84 | 84-88 | 88-92 | 92-99 | 99-106 | 106-116 | 116-126 | 126-138 | 138-148 |
| 4 - HIPS circumference | 92-96 | 97-101 | 101-105 | 105-111 | 111-117 | 117-125 | 125-133 | 133-143 | 143-153 |

SIZE GUIDE **1)** Take the anatomical measurements (body with underwear) without tightening, keeping the measuring tape taut. Note: in case you want to wear of the gowns already with the clothing underneath take the measurements already dressed. **2)** If there is a measure between 2 sizes between the measurements taken, we advise you to take the bigger one. **3)** The measurements in the table are expressed in centimeters.

GIBLORS.COM